

## **PUBLIC CONSULTATION ON REVIEW OF SPECIAL EDUCATIONAL NEEDS DEPARTMENTS AT ORCHARD ACADEMY AND SHEPHERDSWELL ACADEMY**

### **Introduction**

East Midlands Academy Trust is reviewing the provision of its social communication special education needs departments based at Orchard Academy and Shepherdswell Academy, both in Springfield, Milton Keynes.

SEND departments are defined as mainstream education provision with enhanced resources to support the needs of pupils with special educational needs and/or disabilities.

We are proposing to merge the two SEND departments into one merged department based in a newly redeveloped facility at Orchard Academy.

### **Current provision**

Orchard Academy currently has 11 pupils with special educational needs and/or disabilities attached to the SEND department, supported by 9 support staff. Some of these pupils access mainstream lessons at times throughout the day as and when it is appropriate for them.

At Shepherdswell Academy, there are 6 pupils with special educational needs, in the social communication department with 4 members of staff. This is overseen by the SENCO, who works across both schools.

### **The proposal**

We are consulting on the following proposal for the future provision of the SEND departments:

*To create an improved facility at Orchard Academy for SEND pupils and to merge the two departments at Orchard Academy and Shepherdswell Academy and deliver future provision for all SEND pupils across the two schools at the new hub at Orchard Academy.*

The new SEND provision at Orchard Academy would feature two SEND classrooms, an open-plan breakout space, a secure courtyard area with canopy, a soft play area and a sensory room. The project is being funded and delivered by Milton Keynes Council.

## The consultation process

The publication of this consultation document marks the start of our public consultation process. The public consultation period will end at 17:00 on Thursday 15<sup>th</sup> July. If you wish to express any views or comments on the proposals, please let us have your response by no later than the above time and date. All views and responses will be carefully considered before any further decisions on the proposals are made.

As part of our consultation process, we are consulting with the following stakeholders:

- Parents/carers of current pupils and pupils enrolled to start at Shepherdswell in September 2021.
- Staff at the schools.
- Other local schools.
- The local authority, and any other local authorities with pupils on an EHC plan at either school.
- The wider community.
- Other stakeholders, including the local authority and the local MP.

A public notice containing the website address of the full proposal will be published in a local newspaper and will also be displayed in the two school reception areas.

A copy of the proposal will also be sent to the Secretary of State within one week of the date of publication on the website ([schoolorganisation.notifications@education.gov.uk](mailto:schoolorganisation.notifications@education.gov.uk)).

## How to take part

You can take part in our consultation on proposed changes to our SEND departments at Orchard Academy and Shepherdswell Academy in the following ways:

- Website

To find out more about the proposals and complete an online form, visit:

[www.emat.uk/...](http://www.emat.uk/...)

[www.orchard.emat.uk/...](http://www.orchard.emat.uk/...)

[www.shepherdswell.emat.uk/...](http://www.shepherdswell.emat.uk/...)

- Write to:

SEND Consultation  
East Midlands Academy Trust  
Pyramus House  
Roman Way  
Grange Park  
Northampton  
NN4 5EA

- Email:

[consultation@emat.uk](mailto:consultation@emat.uk)

- Virtual meetings

We are holding one virtual meeting where you can find out more about the proposals and give your views. This will take place on:

Thursday 1<sup>st</sup> July at 18:00

This will be an online, virtual meeting. Further details of how to access it will follow in due course, both by email and on our website.

### **Inclusion**

Should you require assistance to take part in our consultation process or would like to request a copy of this consultation document in another language, please call the East Midlands Academy Trust office on 01604 215149.

### Consultation timetable

Highlighted sections for internal use only and not for publication

Wednesday 9 <sup>th</sup> June	Confidential briefing sent to governors
Wednesday 9 <sup>th</sup> June (after school)	Meetings with affected staff at both Orchard and Shepherdswell
Thursday 10 <sup>th</sup> June (morning)	Letters to parents/carers
Thursday 10 <sup>th</sup> June	Consultation opens
Thursday 1 <sup>st</sup> July	Virtual consultation meeting 18:00
Thursday 15 <sup>th</sup> July	Closing date for consultation responses
Friday 16 <sup>th</sup> July	Evaluation of consultation responses
Week of 19 <sup>th</sup> July	Decision

**APPENDIX 1**

**Consultation questionnaire**

Having read the details of the proposal, please indicate whether you support our proposal.

	Yes, I support the proposal	No, I do not support the proposal
To create an improved provision area at Orchard Academy for SEND pupils attached to both 'Cedar' and 'Sparrows,' merging the two departments at Orchard Academy and Shepherdswell Academy.		

Please use the space provided below to add any comments on the proposals.

For monitoring purposes, please could you provide the following details.

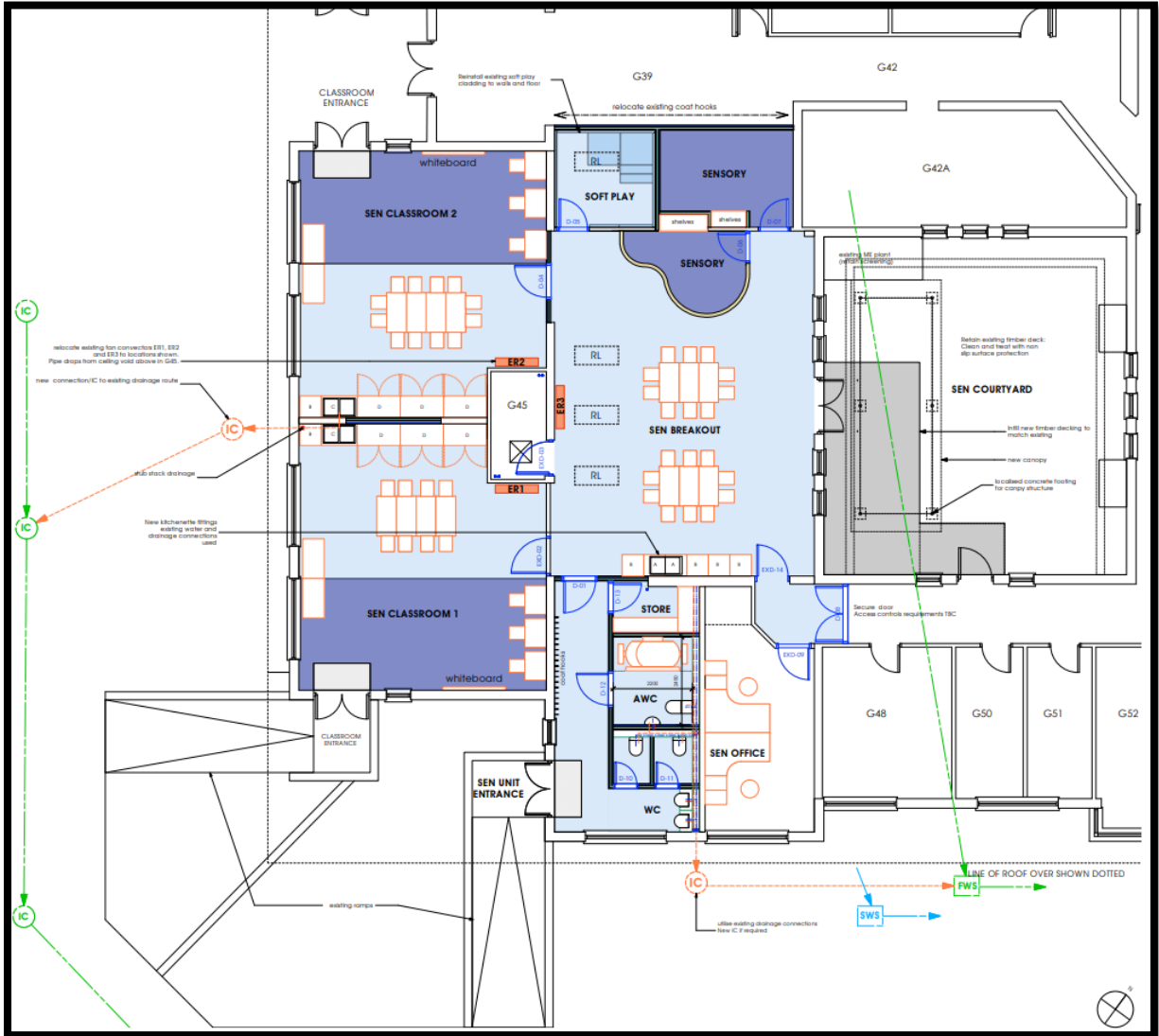
Capacity in which you are responding:

Parent/Carer	
Pupil	
Headteacher	
Member of School Staff	
Governor	
Other	

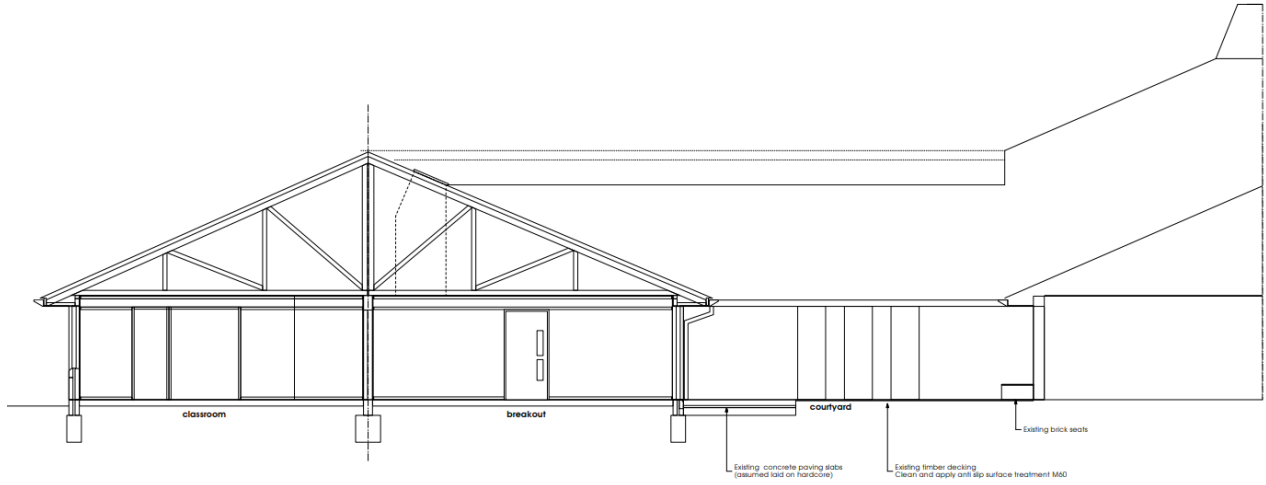
School or organisation you represent, if any:

APPENDIX 2

Proposed Improved Provision Plans

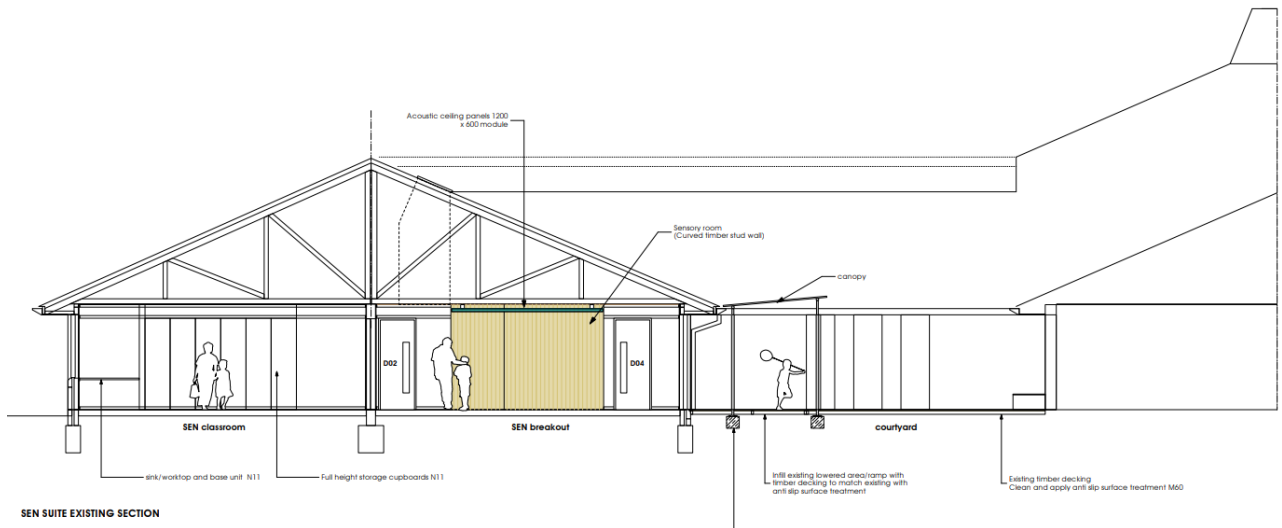


Current Section of development area:



SEN SUITE EXISTING SECTION

Section following proposed improvements:



SEN SUITE EXISTING SECTION